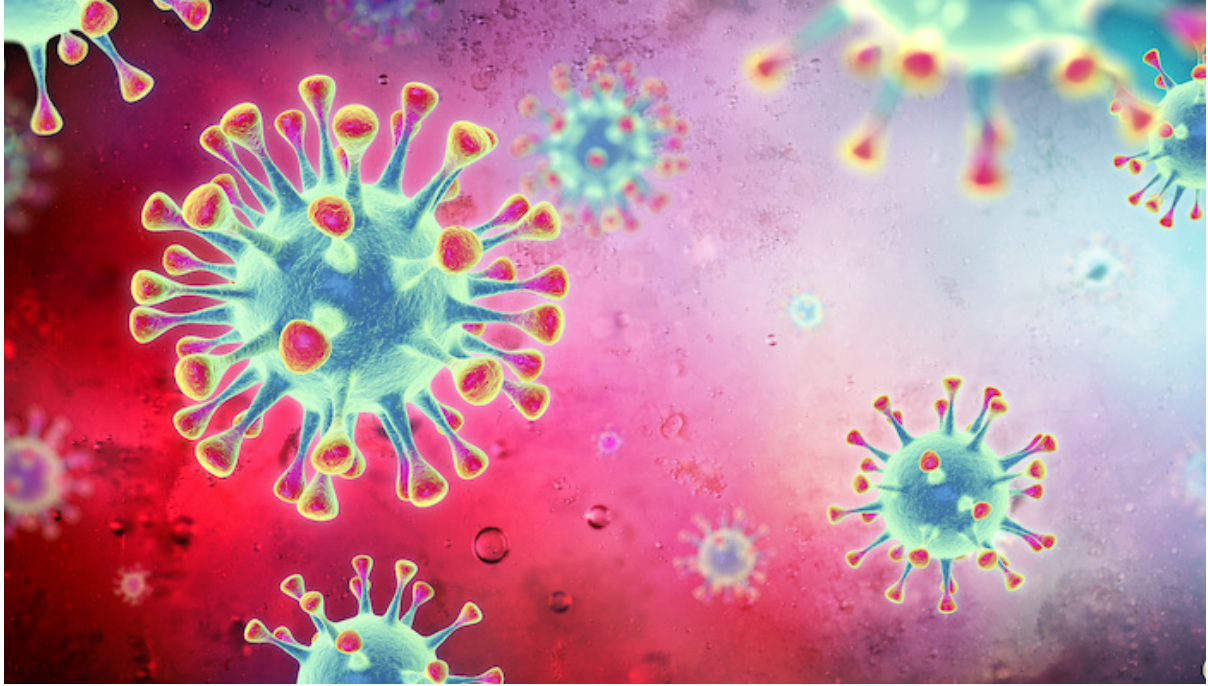


[View this email in your browser](#)

## **Community Strength against the Coronavirus** **News at 25<sup>th</sup> March 2020**

[www.thepeninsulatrust.org.uk](http://www.thepeninsulatrust.org.uk)

### **In this bulletin..**

- Community Volunteers
- The Rame Centre & Post Office
- Door to Door Information
- Shopping and Medicines
- Dog Walking
- Shop Opening Times, Take Away's & Deliveries
- Jobs, Incomes & Benefits
- Phone Support Network
- Emergency Grants
- Food Bank
- Thanking NHS Staff

---

- [Cremyll Ferry](#)

---

Here is our first summary of the community response to the coronavirus challenge.

The community has come together, as ever, in the face of the crisis. Many people are talking directly to their neighbours and helping those in need; the Trust is working to coordinate information and services as needed.

We will send out further bulletins as often as needed and update Facebook.

What a great place we live in! Stay safe, stay strong.

### ***The Trust Team***

---

### **The Virus Volunteers**

We have created a database for those willing to help others. It lists people's contact details, their availability and what they can do to help (examples: food/meds deliveries, shopping, dog-walking, phone conversation). Thanks very much to the dozens of local people who have already offered to help others. If you want to join us, please reply to this Bulletin or ring us on 01752 823909.

We have LOTS of people willing to help – more than are needed right now – but it looks like the situation will get worse before it gets better, so please keep in touch. We'll be writing out regularly to everyone.

#### *An example of our volunteers in action today:*

- *At 11.00am, we had an urgent phone call from the Pharmacy. Their last delivery driver is off sick; they have a mountain of medicine that needs to reach people; they don't know what to do.*
- *By 11.45, a message was out to our Virus Volunteers group*
- *At 2.00pm, the group met outside the pharmacy, divided up 28 deliveries and set off.*
- *It's now 2.35 pm, and all the medicines are delivered, or on the way.*
- *Drivers are going back at 5pm for a second round*

---

## [The Rame Centre](#)



The centre is now closed, apart from Tuesday and Friday mornings when the **Post Office is open**. That service will continue as normal, 9.00am – 12.00am, unless they have a staffing shortage at some point.

We are following all the guidelines on safe distances, hand-washing etc. This slows down the visit time, but helps keep the virus at bay.

The centre's phone line is diverted to our paid staff, working from home, so we are taking calls and emails as normal.

---

## [Door-to-door information](#)

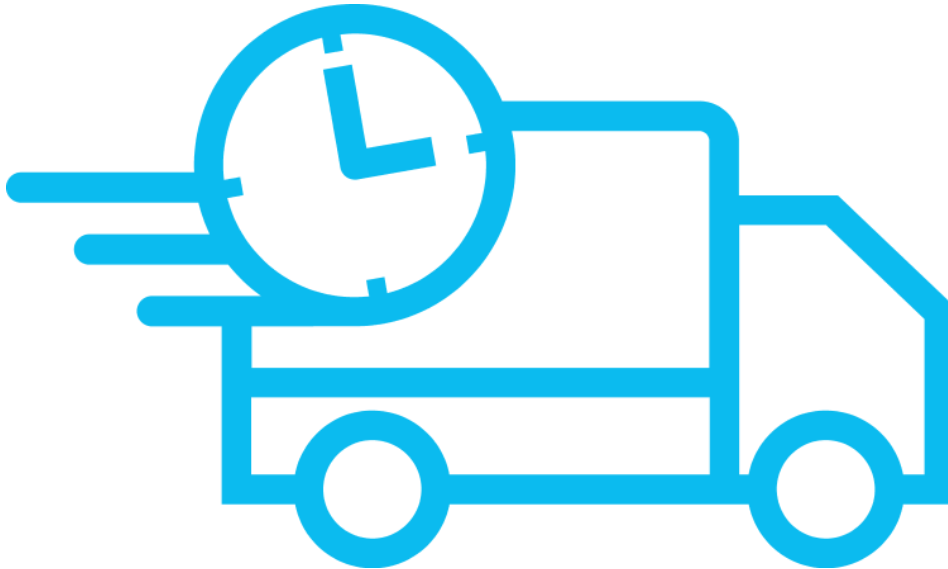
Many people, especially the older generation, don't use computers and are missing out on local news and information. We put out two things last week:

- A general door-to-door leaflet with basic information and reassurance, including the latest advice from the NHS. We are working on a new door-to-door leaflet, aiming to get that out next week (we will be consulting on safe delivery methods).
- The "Good Neighbours" cards. Thanks to Richard Clarke and others, we have a one-to-one support card available that people can fill in to offer help to their neighbours. In two manic days last week, we found enough people to cover pretty much the whole of Millbrook / Cawsand / Cremyll. There are some

---

general leaflet distribution, please [contact us](#).

---



### **[Shopping / medicines](#)**

If people don't have a direct contact with neighbours, we can help. You can ring in to the Rame Centre with a shopping request; we have a cash float here, so one of the volunteers can buy the things you need and bring them to your door. You can pay in cash, by cheque or by bank transfer.

The drivers may need to ask for mileage, 45p per mile, especially for further-away deliveries.

---

### **[Dog-walking](#)**

Several people have come forward offering to walk dogs. Please get in touch if that would help.

---

### **[Shop opening times and deliveries](#)**

There is a brief description of local shops and delivery services on the Rame Directory. Click [here](#) to go to that website. The page is still being developed but aims to show any changes and updates to local services as we move forward, watch this space!

---

People are already losing their jobs and some businesses are closing. The Government has announced huge sums to support people in need, but there are no details yet. We are in touch with the Cornwall Council support team and hope to have reliable information soon from them or direct from the Government. We want to create a Support Team of people who can read through the official material, turn it into normal plain English and help people apply. If you can help with this work – highly suitable for self-isolators! – please [contact us](#).

---

### **[A Phone Support network](#)**

This idea is that people in self-isolation might want to talk to others locally. We can create small groups of people who can ring each other, swap stories and suggestions, and generally keep spirits up. If you are interested, please [contact us](#).

---

### **[Emergency Grants](#)**

Rame Community Fund has been running for 6 years, providing small grants for local people in need. They are ramping up their work to help with the current challenge, but they desperately need donations – their fund is very low.

If you can help, your donation is vital now. How to donate:

- *Bank transfer to Rame Community Fund, sort code 08-92-99, account no 65623697*
  - *Cash to the collection tin in the Rame Centre*
  - *Cheque (to “Rame Community Fund”), to the Rame Centre, or by post to RCF, 2 West Quay, Millbrook, Cornwall, PL10 1AS.*
- 

### **[Food Bank](#)**

The local Food Bank’s work continues as always, with new urgency and a much higher need. As The Rame Centre will be closed we are working on a new drop off point to be confirmed shortly.

### **[Thanking the NHS staff](#)**

We’re putting together boxes of goodies for the staff in Penntorr doctor’s surgery, the pharmacy, Derriford and Liskeard hospitals, to thank them for all their work during this period when they’re already so stretched.

Ideas include chocolate, sweets, cake, tea, coffee, squash, juice. Hand cream (“our

---

hearts.

Thank you Patrica Dillon for this great idea! As per the Food Bank we are working on a new collection point to be confirmed very soon.

---

### Library books

The Rame Centre microlibrary is closed except when the Post Office is running, but access is limited. We are thinking about a Home Delivery service for library books, maybe also donated books and board games. We're currently looking into safe delivery (apparently books can be microwaved????!!!)

Another great idea is to deposit book donations in the Tanyard phone kiosk.

---

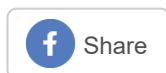
### Natwest Mobile Banking & The Cremyll Ferry.

Both of the above services have been temporarily suspended pending further notice.

---

***We will keep sending out information and support. Stay strong everybody, this will pass!***

---



Copyright © 2018 THE PENINSULA TRUST, All rights reserved.

**Our mailing address is:**  
admin@thepeninsulatrust.org.uk

[unsubscribe from this list](#) [update subscription preferences](#)

[Subscribe](#)

[Past Issues](#)

[Translate](#) ▼

The Peninsula Trust · 5 West Street · Milbrook · Torpoint, Cornwall PL10 1AA · United Kingdom

